



**Eclairage  
TECHNO**

Consultant en éclairage / Lighting consultant

**LIGHTING IS NOT JUST ART,  
IT'S SCIENCE!**

## Computerized lighting calculations and renderings

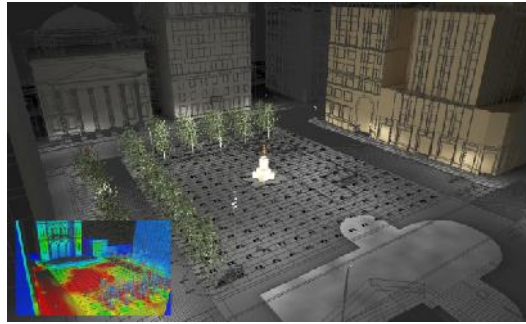
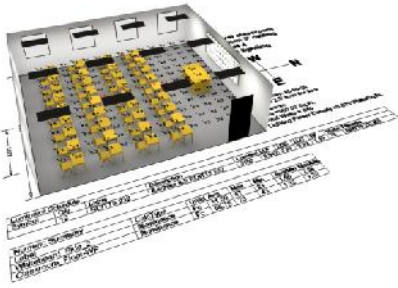
More than 30 years of experience in the  
lighting field.

- ARCHITECTURAL LIGHTING
- DAYLIGHTING
- FACADE FLOODLIGHTING
- EMERGENCY LIGHTING
- HOTEL LIGHTING
- INDUSTRIAL LIGHTING
- LIGHTING FOR PARKING FACILITIES
- LIGHTING MERCHANDISING AREAS
- MUSEUM LIGHTING
- OFFICE LIGHTING
- ROADWAY LIGHTING
- SCHOOL LIGHTING
- SPORTS AND RECREATION AREA LIGHTING
- TUNNEL LIGHTING

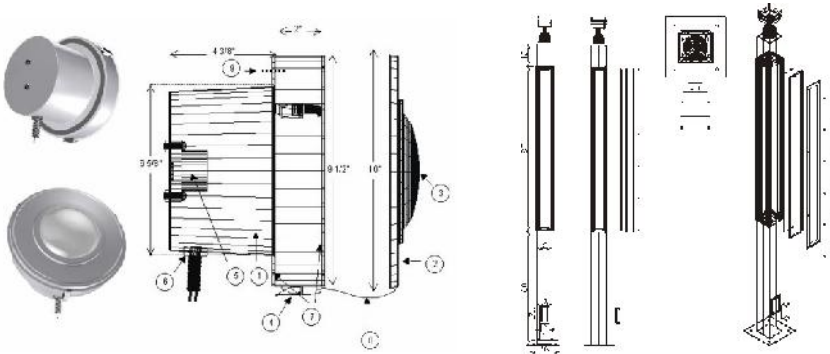
We offer our technical services to manufacturers,  
agents, architects, engineering firms, designers,  
electricians, and some corporate companies.



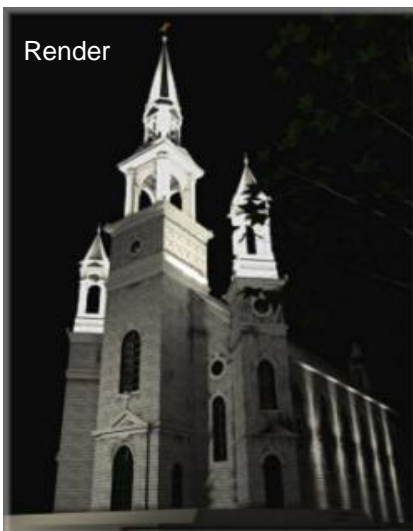
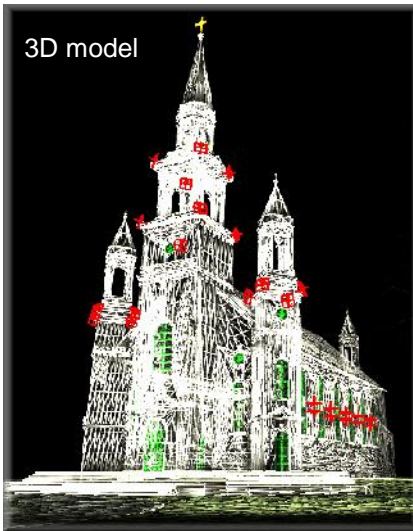
## Point by point calculations



## 3D modeling and design of custom fixtures



## Rendering of the lighting in a 3D model



We at **Éclairage Techno** offer technical services related to the lighting industry. The company was founded in 1996 by Mr. Peer Eric Moldvar. Owing academic knowledge in engineering and administration Mr. Moldvar has more than 28 years experience having worked for different companies in the lighting field, relating to the retail, distribution, and manufacturing market. His deep knowledge with light sources, light level calculations and complete fixture manufacturing processes makes him a reference and pillar in the industry. He's a board member of the IES Montreal section and is heavily involved in providing seminars and give the IES lighting course. He's also an AGI32 Authorized Instructor .

The company has an extensive library, lighting documents, books and manufacturers catalogs. But what makes Eclairage Techno so special ,is our computer work station. Using the latest computer and software technologies. A flexible work schedule capable of responding quickly to the most demanding request.

Our expertise and state of the art hardware will make realising your most complicated lighting project simple.

Our customer base is largely composed of Lighting manufacturers, agents, architects, engineering firms, designers, electriciens, and some corporate companies.

- **Point by point lighting calculations.** (AGI32 )

- **3D modeling and lighting rendering** (agi32 and Lightscape)

- **Architectural lighting design**

- **Luminaires and optic systems designs**

- **3D modeling of custom luminaires**

- **Technical and graphic illustrations**

- **Maintenance of photometric data bank**

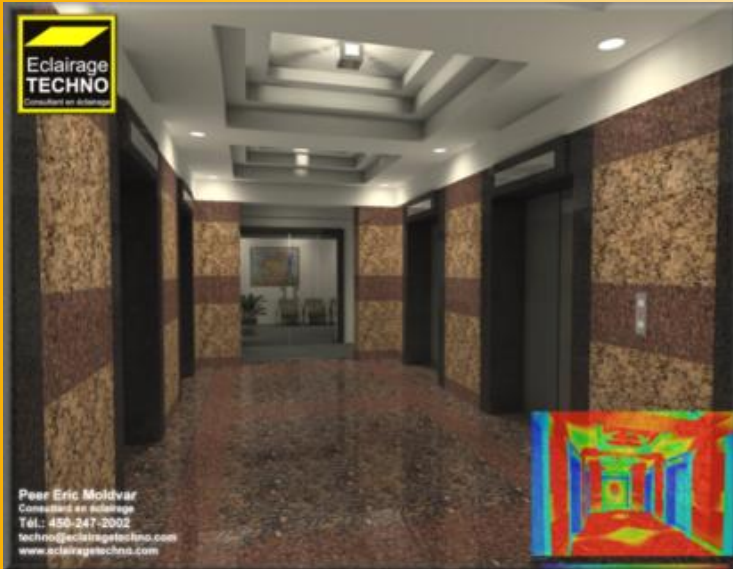
- **Web page design and maintenance.**

- **3D animated videos**

- **LEED Lighting reports**

Éclairage **TECHNO**  
 8015 boul. du St-Laurent, suite:105  
 Brossard, QC  
 Canada, J4X 0A9  
 Tel.: 450-486-3440  
 techno@eclairagetechno.com  
 www.eclairagetechno.com





**Here's a few costumers for whom we work for:**

**Manufacturers:**

Stanpro , Novus, Thomas & Betts, Peerless, Philips, Edward, Foresight, Diversified, LunaGlow, Lumca, LumiConcept, Novalux, AD+L, Dinico, Luxo, Canlyte, One Step Lighting, Paco, Schreder, Quattro, Metalumen, Carmanah, Emergylite, Light Alarm, Lumacell, Coronet, ...

**Manufacturers Agents :**

Groupe Lumitech, Luxtec, Turkil Sales, WS sales, Craig Browne & Associates, For-trem, Ripple associates, Titan Marketing, Lighting Solutions, Lighting Source ,Synegy, ...

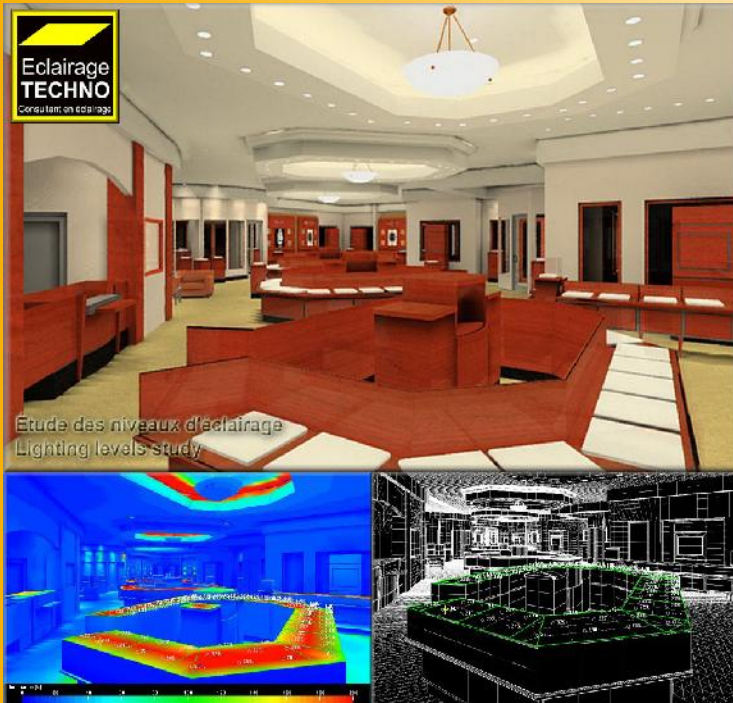
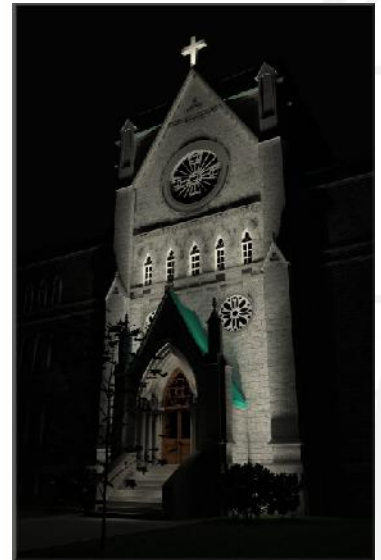
**Architects, Designers and Engineers:**

Robert Ouimet Design , DMA, Lemay et ass., Groupe Séguin, Rousseau-Lefèbvres, Oberto Oberti, Leni Schwendinger, Piuze et ass., Planex, BPA, Jim Crowell, Eclairage Public, Lightemotion,...

**Others:**

Alcan, Audi Canada, Université McGill, Henry-Birks & Sons, Ultramar, CN, SITQ, La Cordée, Le Groupe Archambault inc, Mayors, Couche Tard, ...

**Emergency lighting**



**LIGHTING IS NOT JUST ART,  
IT'S SCIENCE!**

## Architectural Lighting

Lighting is not just art it's science. As soon as the night has fallen , lighting brings a new dimension the architecture. Not only does lighting, bring security it also gives depth to all architectural surroundings when properly used and adds value to certain specific achitectural elements.

Before investing in some lighting fixtures, why not consult. The consultant is there to assure the right positionning for the right luminaire with the best distribution possible thus avoiding glare or light trespass.

The consultant is there to apply science to the art of lighting. With the help of computers and softwares, he's able to evaluate the distribution of the light in a defined space. He's able to calculate the amount of light on any surface and predict it's overall result.

The consultant is there to create the ambiance you're looking for. He will dose the intensity of light and play with different color temperatures. He is there to optimize the results with a minimun of fixtures but placed and aimed at the right location.

To avoid spending unnecesarily and be faced with the installation of luminaires that won't respond to your need, du to bad positioning and photometric distribution, why not consult somebody with experience who has the tools to help you?

Éclairage **TECHNO**  
8015 boul. du St-Laurent, suite:105  
Brossard, QC  
Canada, J4X 0A9  
Tel.: 450-486-3440  
techno@eclairagetechno.com  
www.eclairagetechno.com

