

We at **Éclairage Techno**, offer technical services related to the lighting industry. The company was founded in 1996 by Mr. Peer Eric Moldvar. Owing academic knowledge in engineering and administration, Mr. Moldvar has more than 28 years experience, having worked for different companies in the lighting field, relating to the retail, distribution, and manufacturing market. His vast knowledge with light sources, light level calculations and complete fixture manufacturing processes makes him a reference and pillar in the industry. He was a board member of the Montreal section of **IES** for many years and is presently heavily involved in teaching the advancement of lighting. Mr. Moldvar is also a **AGI32** authorized trainer for the account of **Lighting Analysts**. In 2009 he became part of the IES committee involve in the elaboration of standards in "Roadway Tunnels & Underpasses Design & Application" (**RP22**). He's teaching Lighting at École Polytechnique department of Montreal University and was a IES Montreal teacher for many years.



Here's some manufacturers and lighting agents who use our services.

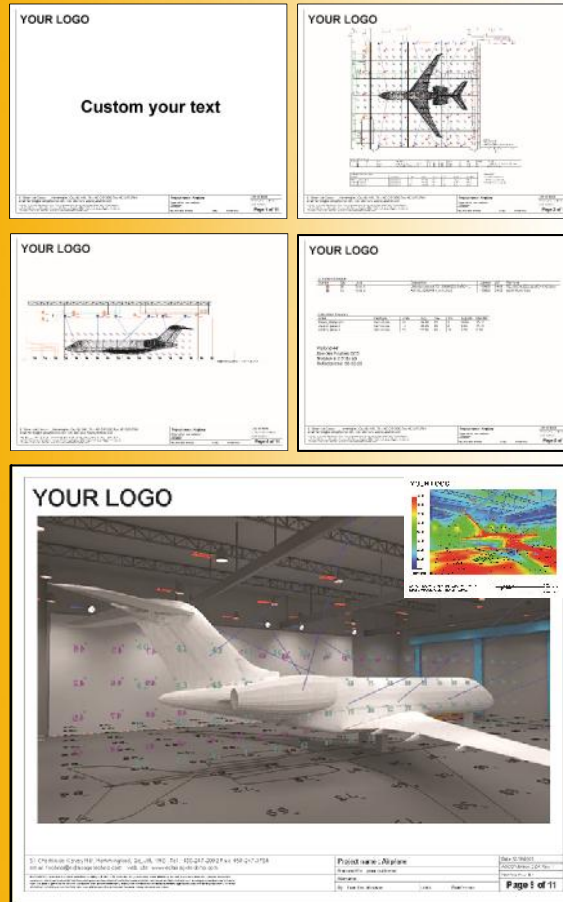
Manufacturers:

Aimlite, AD+L, Carmanah, Coronet, Cyclone, Dals, Earthlite, Cooper Lighting by Eaton, Emergilite, GE, Hubbell, Lightalrms, Lumacell, Luxo, Metalumen, Novus, On Light, Paco Lighting, Peerless, Philips, Quattro Lighting, ReadyLite, Schröder, Stanpro LS, Thomas & Betts, ...

Manufacturers Agents :

Fortrem, Futura Sales, Groupe Lumitech, Innersource, LedSource Group, Lighting Solutions, Lighting Systems, Litetech, Lumigourp, Premium Lighting integration, STL lighting groupe, Turkil Sales, Ripples and associates, Titan Marketing, Urbex ...

Rapport technique AGI32



Simulation Lightscape



LIGHTING IS NOT JUST ART, IT'S SCIENCE!

Computerized lighting calculations and renderings

Let us be part of your photometric department team.

Since 1996, Éclairage TECHNO, has been helping lighting companies sales and technical departments by offering them computerized lighting layouts, renderings and 3D animations.

We're only a phone call away or just a few clicks. Our team has a wide experience in many field of lighting like:

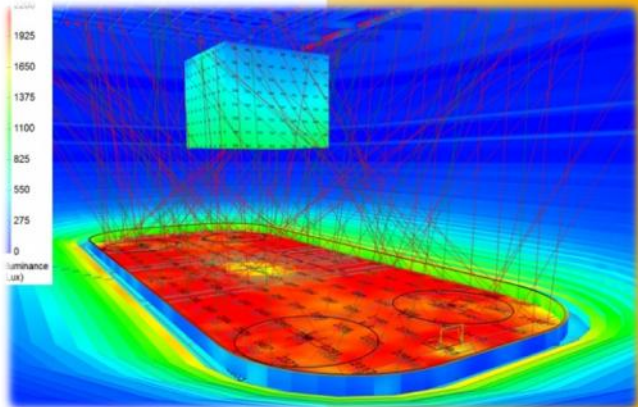
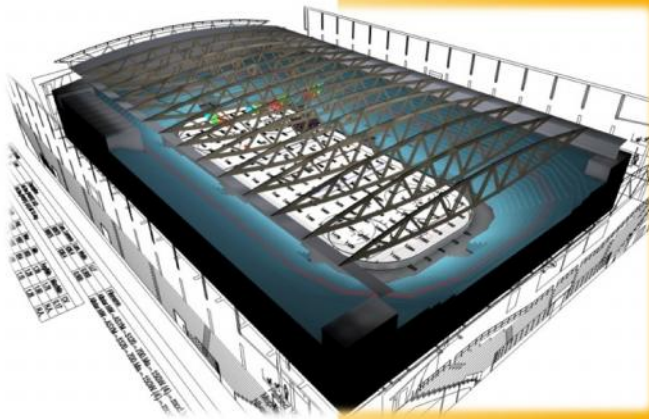
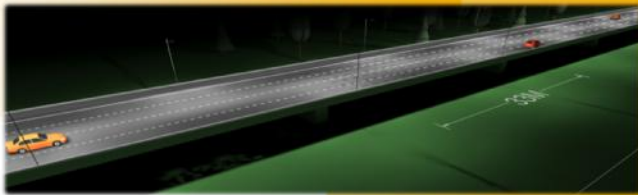
- Roadway lighting standard: RP8
- Parking lighting: RP20, LEED, MLO
- Tunnel Lighting : RP22
- Sport lighting standard: IES RP6, NHL, NBA, NCAA,
- Office Lighting: RP1, VCP, UGR.
- Emergency Lighting : CNBC, NFPA
- Daylighting : LEED

We also validate lighting projects in:

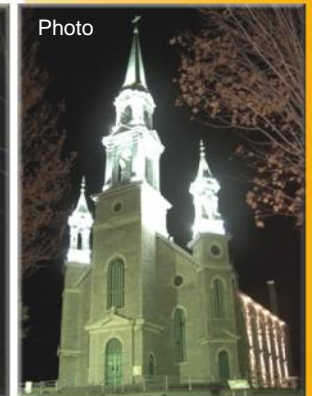
- Commercial and institutionnel application
- Industriel applications
- Architectural applications

Éclairage **TECHNO**
 8015 boul. du St-Laurent, suite:105
 Brossard, QC
 Canada, J4X 0A9
 Tel.: 450-486-3440
 techno@eclairagetechno.com
 www.eclairagetechno.com

AGI32 renders



Lightscape renders



Éclairage **TECHNO**
 8015 boul. du St-Laurent, suite:105
 Brossard, QC
 Canada, J4X 0A9
 Tel.: 450-486-3440
techno@clairagetchno.com
www.eclairagetchno.com